



ML-6500C - 300 W Fiber Laser Welder

The ML-6500C 300 W Fiber Laser Welder is a perfect solution for the seam welding of sheet metals, plastic welding and cutting. Its all-in-one design makes it easy to integrate into a manufacturing line.

Key features ML-6500C - 300 W Fiber Laser Welder

- > Small focus with longer focal lengths
- > Higher efficiency than lamp pumped systems
- > Plug and play systems
- > Estimated diode life time > 100.000 hours
- > Integrated internal chiller
- > Integrated beam splitter (up to three outputs)
- > Energy share or time share available for certain models upon request
- > Outstanding beam parameter product
- > CW / Pulse selectable
- > Pulse : 1 to 5000 pps
- > Fiber diameter: SI 0.05 - 1 mm
- > Environment 5 to 50°C with humidity 50 to 85 %
- > IP 54

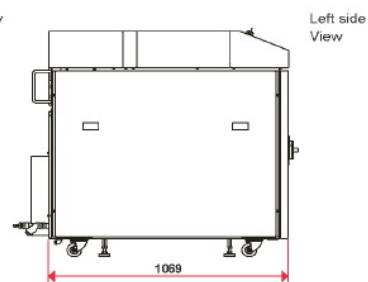
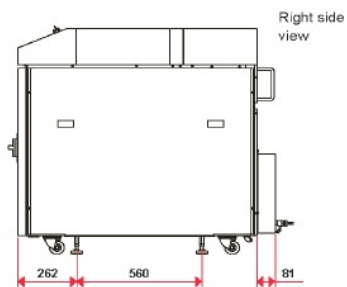
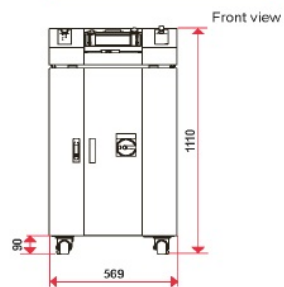
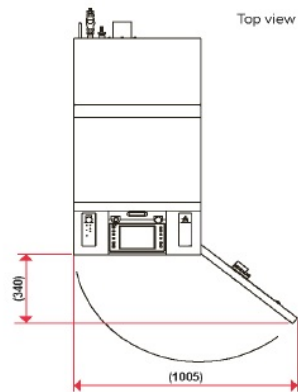
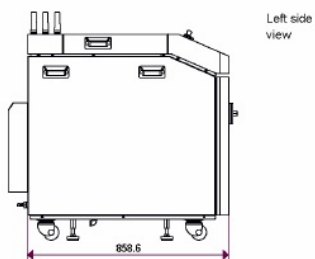
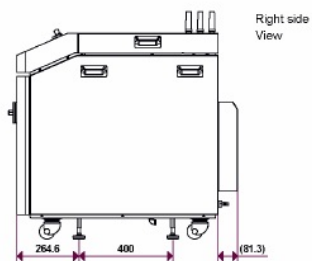
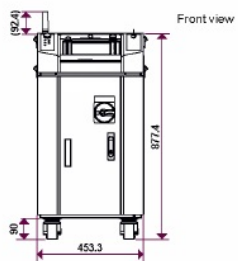
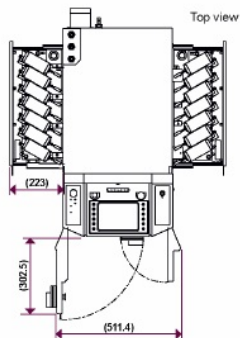
Specifications ML-6500C - 300 W Fiber Laser Welder

Model	ML-6500C
Maximum rated output	300 W
Power requirements	3-phase, 200 V to 400 V AC (+10% / -15%), 50/60 Hz
Breaker rated current	20A (380 V / 400 V)
Cooling	Water - Water
Weight	240 kg
Safety class	Class 4 laser, pilot laser: Class 1
Certification	CE compliant

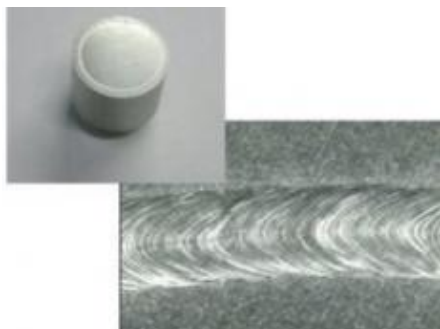
Drawings ML-6500C - 300 W Fiber Laser Welder

⇒ For ML-6500C, four FC-LDs are contained on each side.

Unit: mm



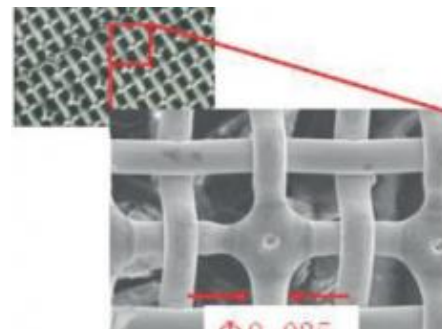
Product applications ML-6500C - 300 W Fiber Laser Welder



Fine cutting of metals



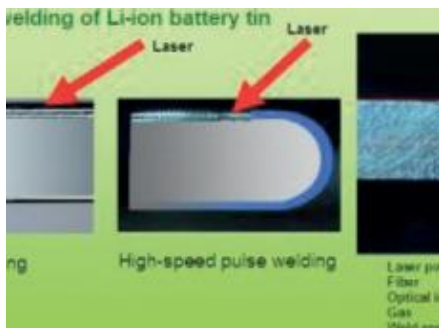
Bellow welding



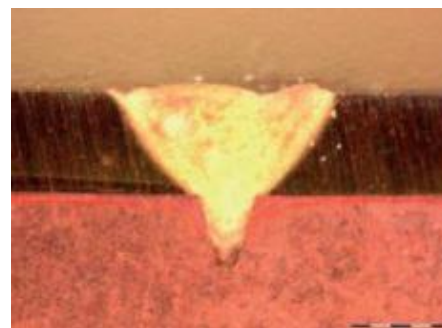
Brazing



Plastic Welding



Cladding

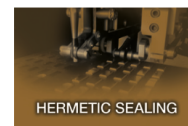


CuSn6

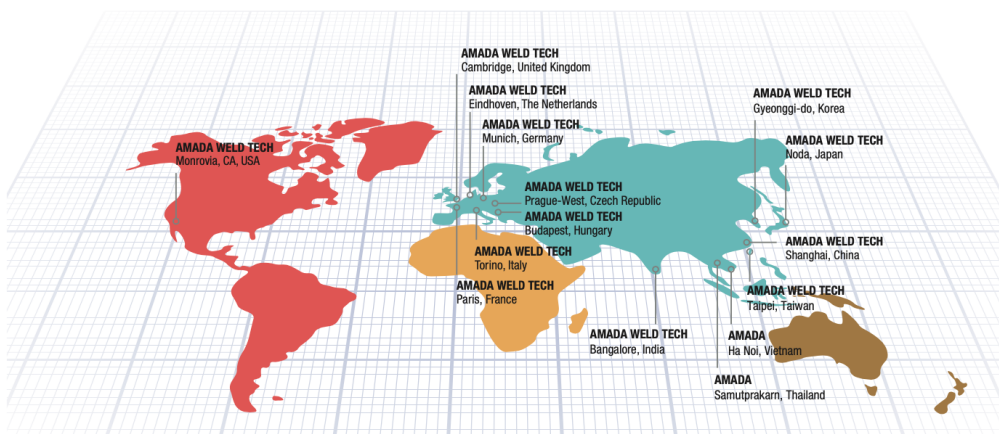
AMADA®

AMADA WELD TECH

OUR TECHNOLOGIES



OUR SALES OFFICES



AMADA WELD TECH GmbH
Lindberghstrasse 1 • DE-82178 Puchheim, Germany
T: +49 (0) 89 83 94 030 • Fax : +49 (0) 89 839403 68
info@amada-weldtech.eu • www.amada-weldtech.eu
ISO 9001 Certified Company

Please contact our worldwide
network here:



follow us on:



All data, images and text are subject to change at any time. AMADA WELD TECH GmbH reserves the right to change, modify, delete and add technical specifications and product details at any time without prior notification. © 2020 AMADA WELD TECH GmbH.

WWW.AMADAWELDTech.EU